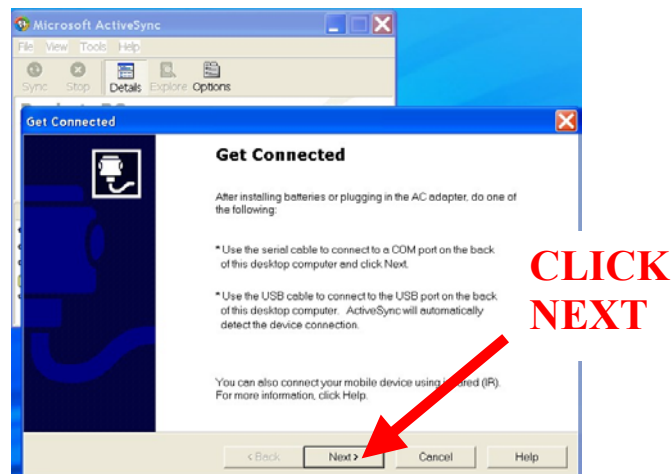
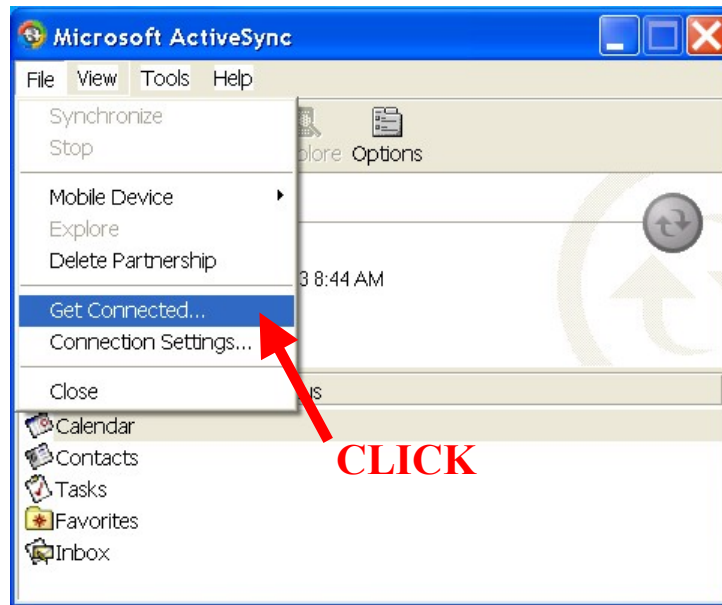
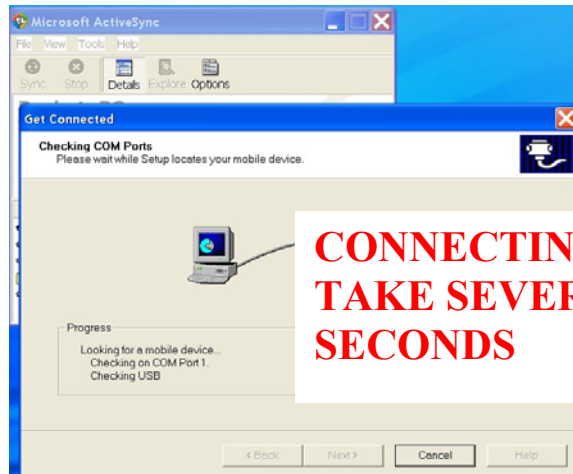


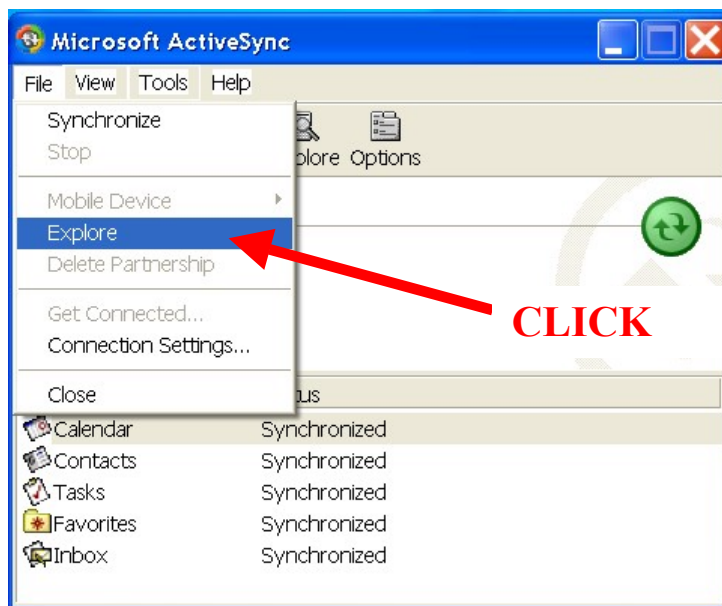
## Retrieving Data from Pocket-Situ4

1. Exit Pocket-Situ4 on the Pocket PC. Otherwise there may be a sharing violation when you try to copy the test file.
2. Connect Pocket PC to Desktop PC using COM1 serial port
3. Activate Microsoft ActiveSync.
4. Follow the diagrams below. **Directions in RED.**

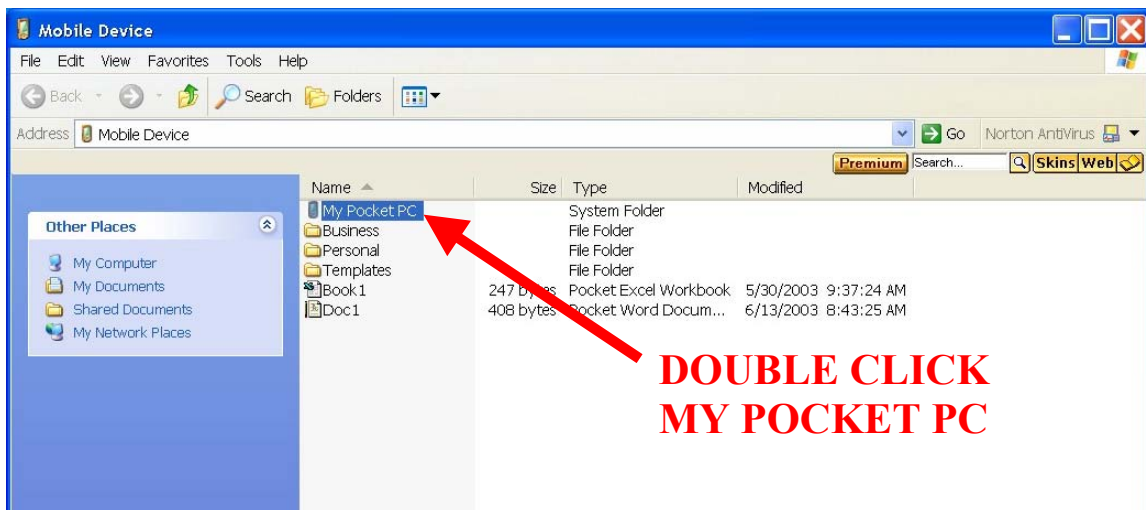




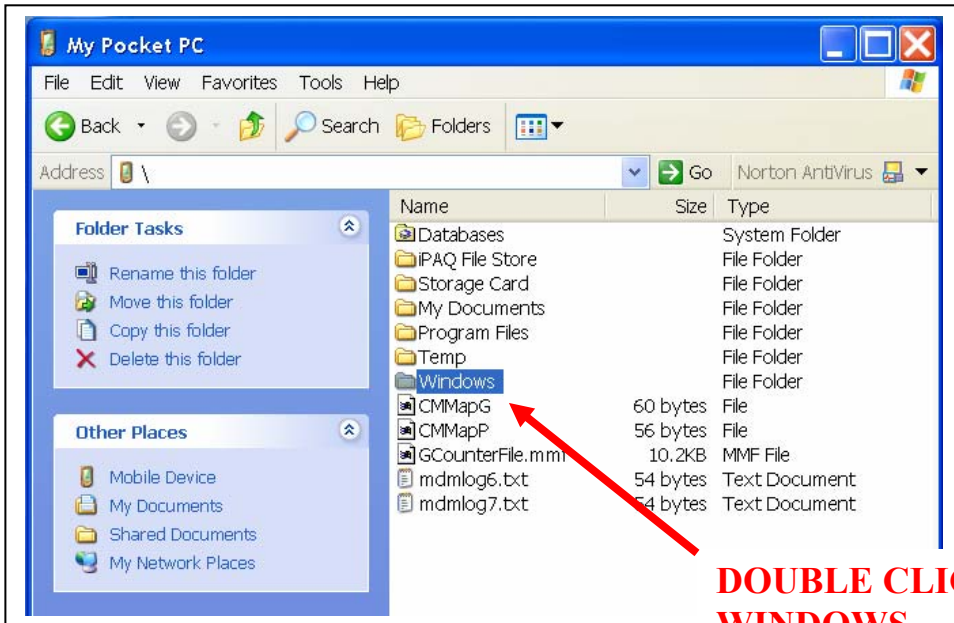
**CONNECTING WILL TAKE SEVERAL SECONDS**



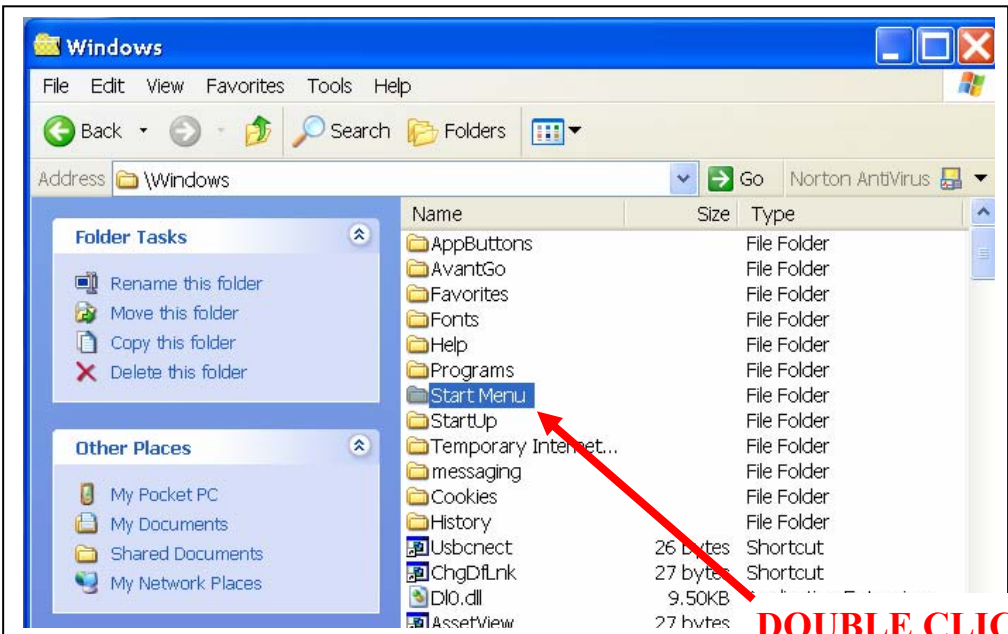
**CLICK**



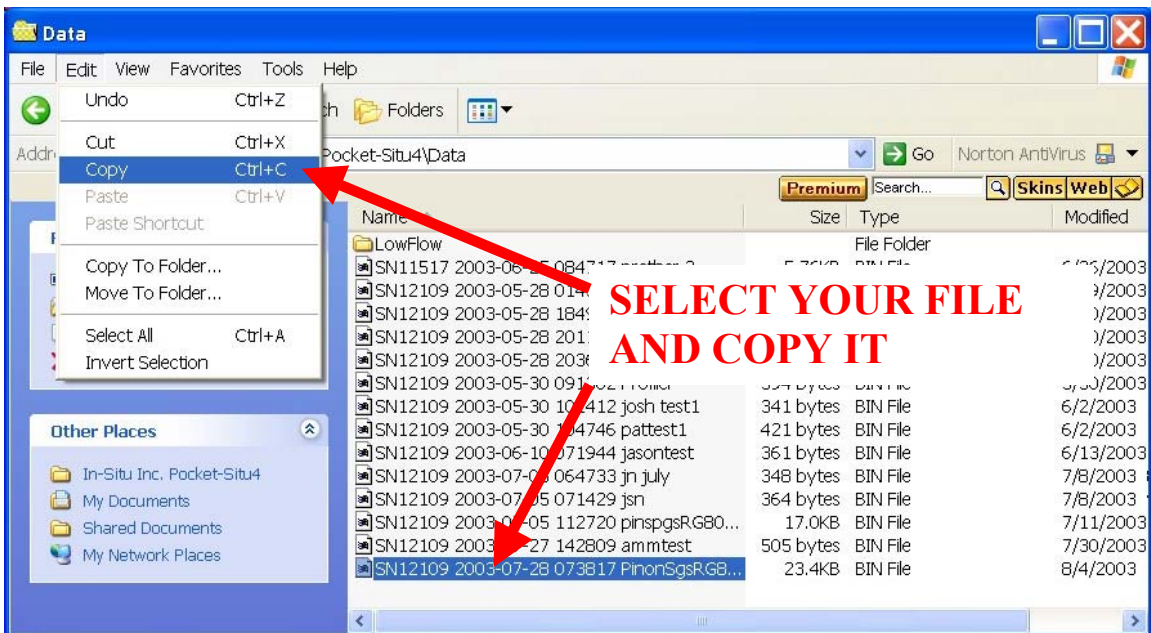
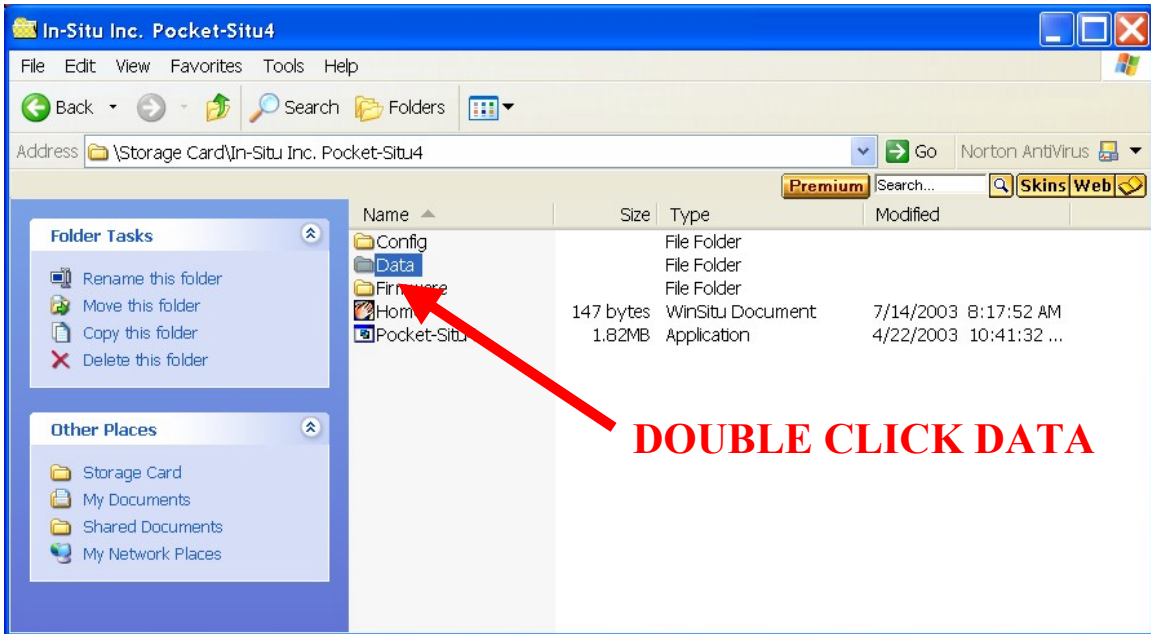
**DOUBLE CLICK MY POCKET PC**

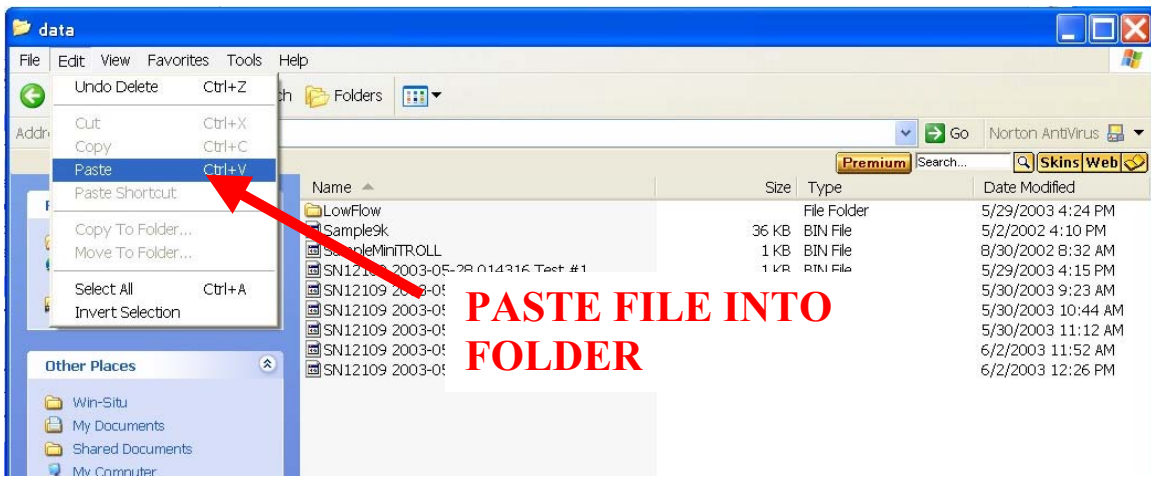
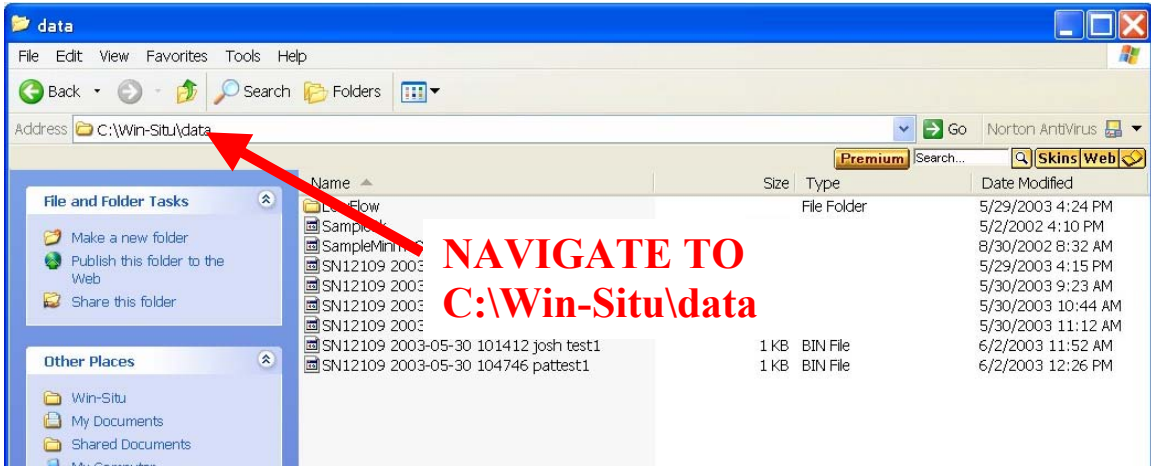


**DOUBLE CLICK  
WINDOWS**

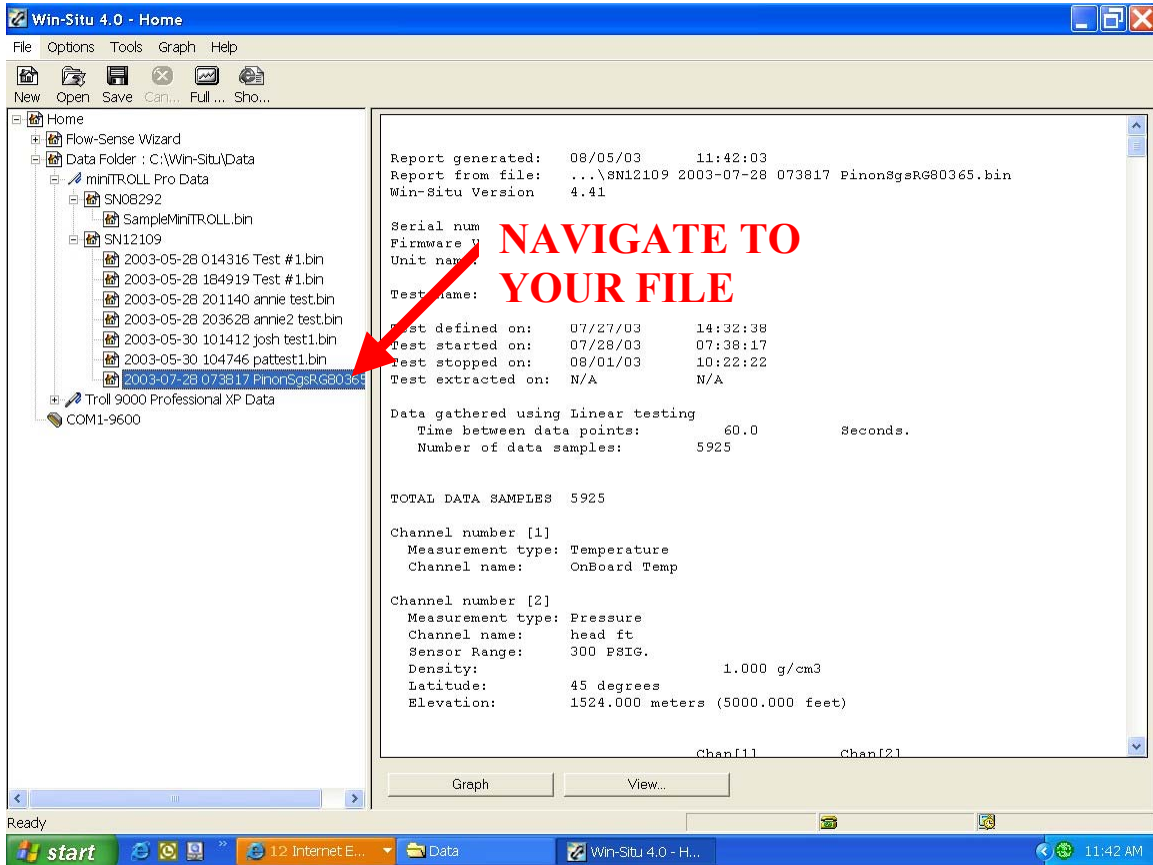


**DOUBLE CLICK  
START MENU**





# Open Win-Situ 4.0



**NAVIGATE TO  
YOUR FILE**

**EXPORT DATA TO  
EXCEL FOR  
ANALYSIS**

